

UNISON MODE

All voices are automatically assigned to the notes you play. There are three variations; Staccato sends a trigger each time a note is pressed, Legato only re-triggers after all held notes are released, and Legato Monophonic assigns all voices to a single note.

ROUND-ROBIN MODE

Each note is assigned to one of five voices in a sequence, creating a rotating pattern of sound. There are three variations; forwards, backwards and random.

FIVE VOICES

Five voice polyphony, with individual waveforms, octaves and level selection for each voice. Each voice is then paired with its own amplifier, envelope and LFO.

OSC LEVEL

Level of all five voices. Raising it past the center adds harmonic richness that grows from a subtle analog glow to heavy saturation.

SUB PER VOICE

Each voice is paired with its own dedicated sub-oscillator with global controls for waveform and octave.

NOISE/EXTERNAL

Level for noise or external inputs, with a dedicated tilt EQ.

PRESETS

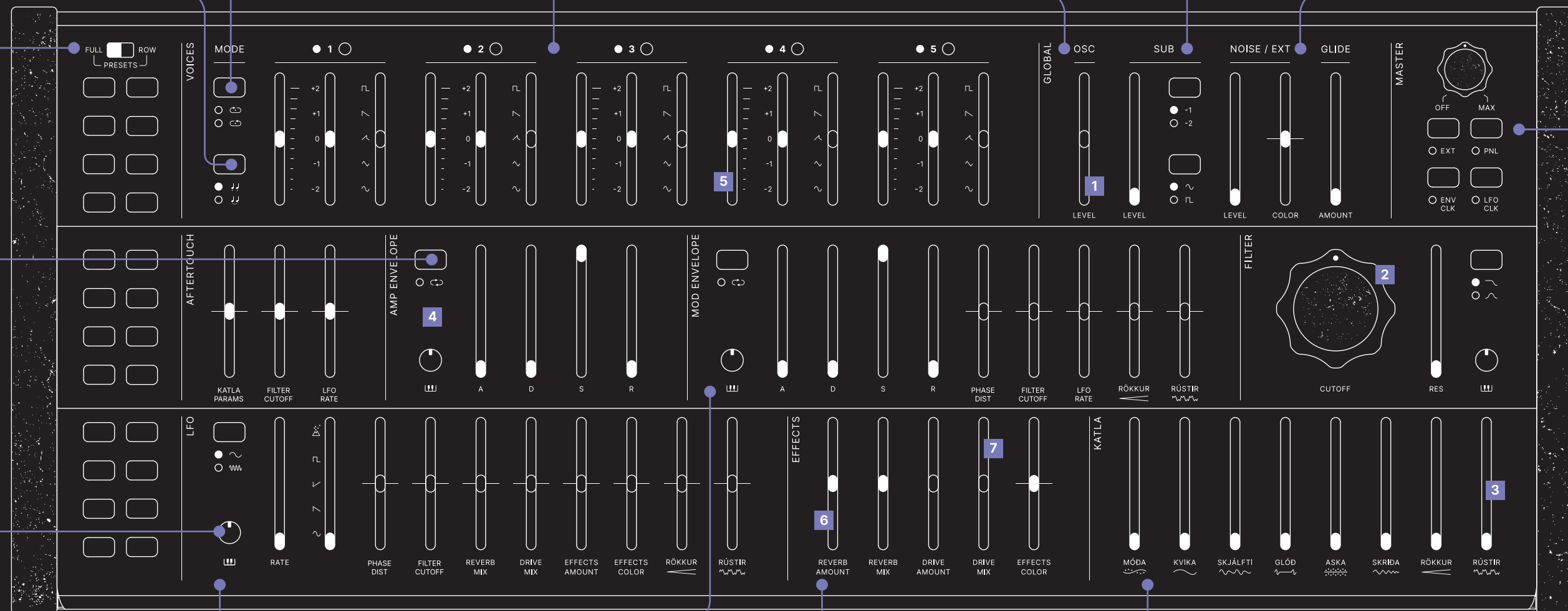
Preset buttons are divided into three rows, with each row controlling presets for its sections. Switch to FULL to select presets for all rows.

LOOPING ENVELOPES

Katla's looping envelopes blur the line between envelopes and LFOs, allowing you to craft rhythmic, evolving patterns or tempo-synced modulation.

KEYBOARD TRACKING

Keyboard Tracking adapts envelopes, LFO timing, and filter cutoff to the pitch of each note, making each note respond with its own unique character and movement.



EXTERNAL

Switch between noise and external inputs.

PANEL MODE

Panel mode bypasses presets and gives you full control of the panel as is.

ENVELOPE CLOCK

Enable Envelope sync to your DAW or any external clocking device.

LFO CLOCK

Enable LFO sync to your DAW or any external clocking device.

LFO SECTION

The five LFOs are controlled via a single interface and can be offset depending on the pitch of each note.

MOD ENVELOPE

Mod Envelopes generate time-based modulation signals, shaping parameters like filter, and LFO rate.

STEREO EFFECTS

Katla features a lush reverb inspired by iconic 1980s hardware, routed through a boutique CMOS distortion.

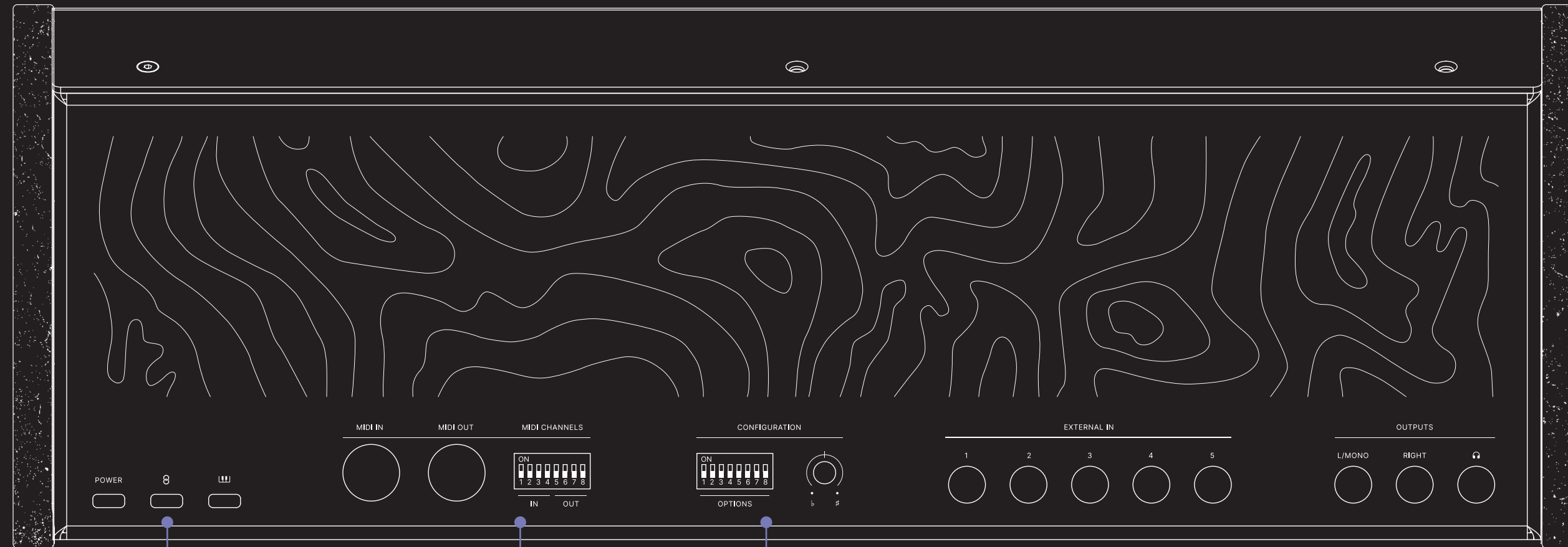
KATLA PARAMETERS

A set of wildcard parameters designed to infuse the synthesizer with unpredictable, organic behavior.

AUDIO PATH

- 1 Main OSC
- 2 Filter
- 3 Rústir
- 4 Amplifier
- 5 Per-voice Level
- 6 Reverb
- 7 Distortion

KATLA



GENKI LINK


Use this port to send MIDI from your computer. You can also use this port to update and configure Katla.


MIDI CHANNEL

Channel selection works by counting in binary.

Switch 1 = 8
Switch 2 = 4
Switch 3 = 2
Switch 4 = 1

Choose your MIDI Channel by adding up the numbers and adding 1. Consult the manual for further details.

 = Channel 6

 = Channel 15

By default MIDI channel 1 accepts all MIDI messages.

OPTIONS

1. MIDI In
2. MIDI Out
3. Round Robin Reset
4. Unison Grace Period
5. MOD Wheel
6. LFO Retrigger
7. Global Detune
8. External In Level

Off

MIDI
Single Channel
Off
Off
Katla
Off
Detune
Line/Modular

On

MPE
Voice Specific
On
On
Pitch LFO
On
Pitch Drift
Instrument

FULL MANUAL AND CONFIGURATION

